



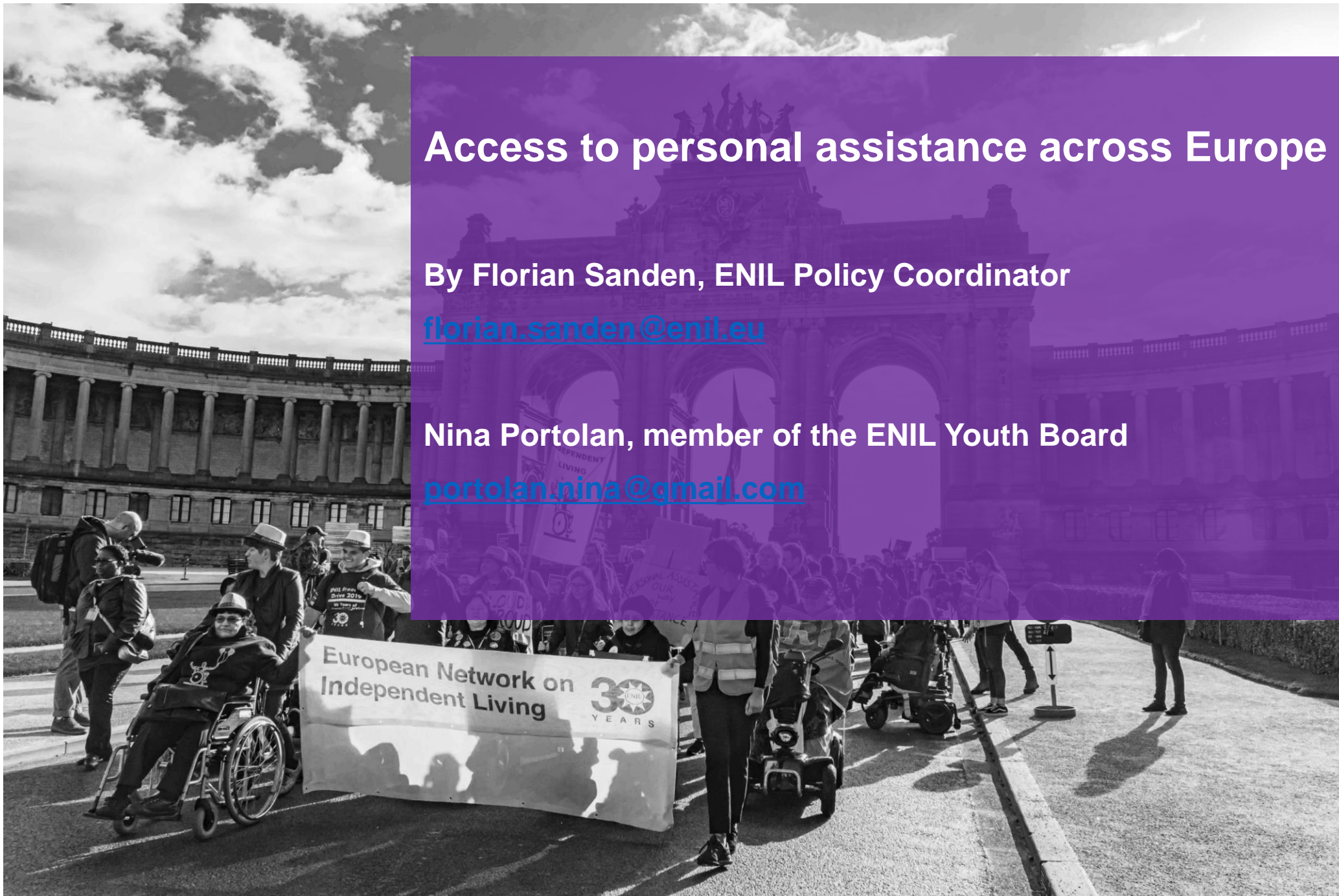
Access to personal assistance across Europe

By Florian Sanden, ENIL Policy Coordinator

florian.sanden@enil.eu

Nina Portolan, member of the ENIL Youth Board

portolan.nina@gmail.com





ENIL Independent Living Survey

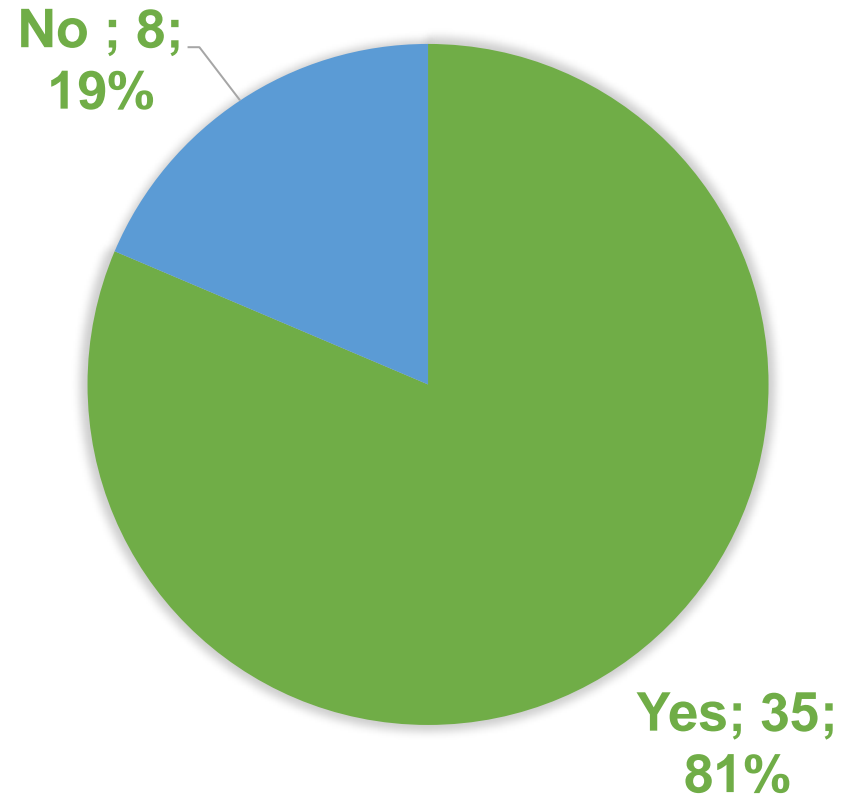
- Conducted between 2020-2022
- General information about access to Independent Living, detailed information about Personal Assistance
- Questionnaire based on Art. 19 UNCRPD and [ENIL's Personal Assistance checklist](#)
- Send to disabled people (PA users) in 43 countries in the Council of Europe area



ENIL Independent Living Survey

- No PA in
 - Bosnia and Herzegovina
 - Armenia
 - San Marino
 - Luxembourg
 - Hungary
 - Turkey
 - Ukraine
 - Belarus

THE COUNTRY HAS A PUBLICLY FUNDED PERSONAL ASSISTANCE SCHEME



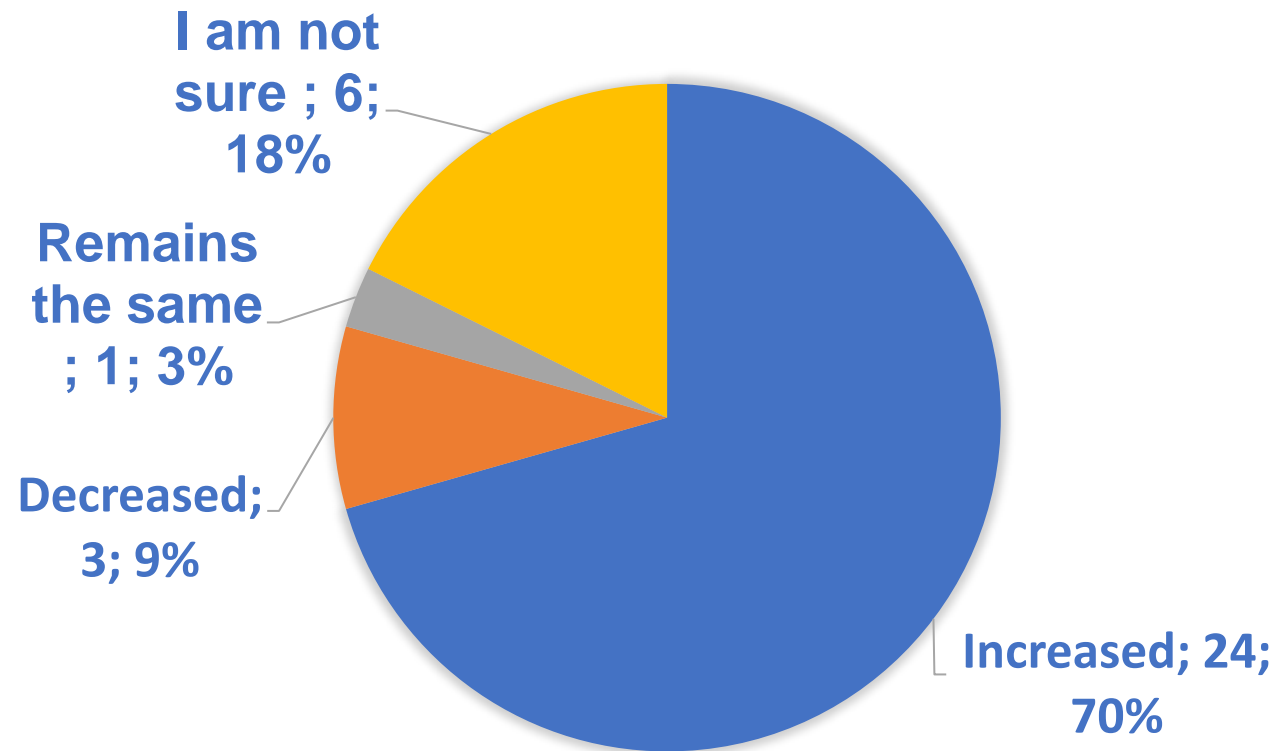


ENIL Independent Living Survey

- Number of PA users has decreased in:

- Denmark
- Sweden
- England

HAS THE NUMBER OF PA USERS NUMBER INCREASED, DECREASED OR REMAINS THE SAME (E.G. DUE TO WAITING LISTS) IN THE LAST 5 YEARS?



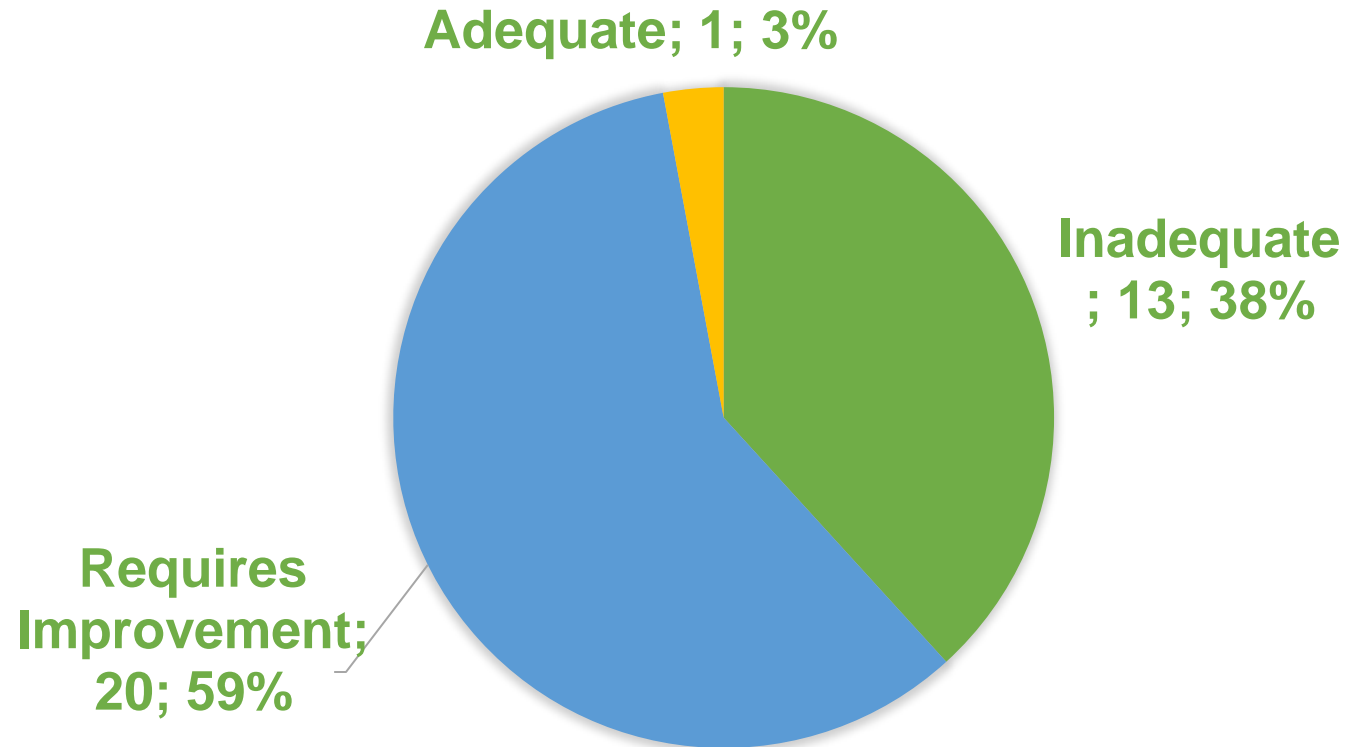


ENIL Independent Living Survey

Q 1: How would you describe access to personal assistance (PA) in your country?

- Adequate
- Requires improvement
- Inadequate

HOW WOULD YOU DESCRIBE ACCESS TO PERSONAL ASSISTANCE (PA) IN YOUR COUNTRY?

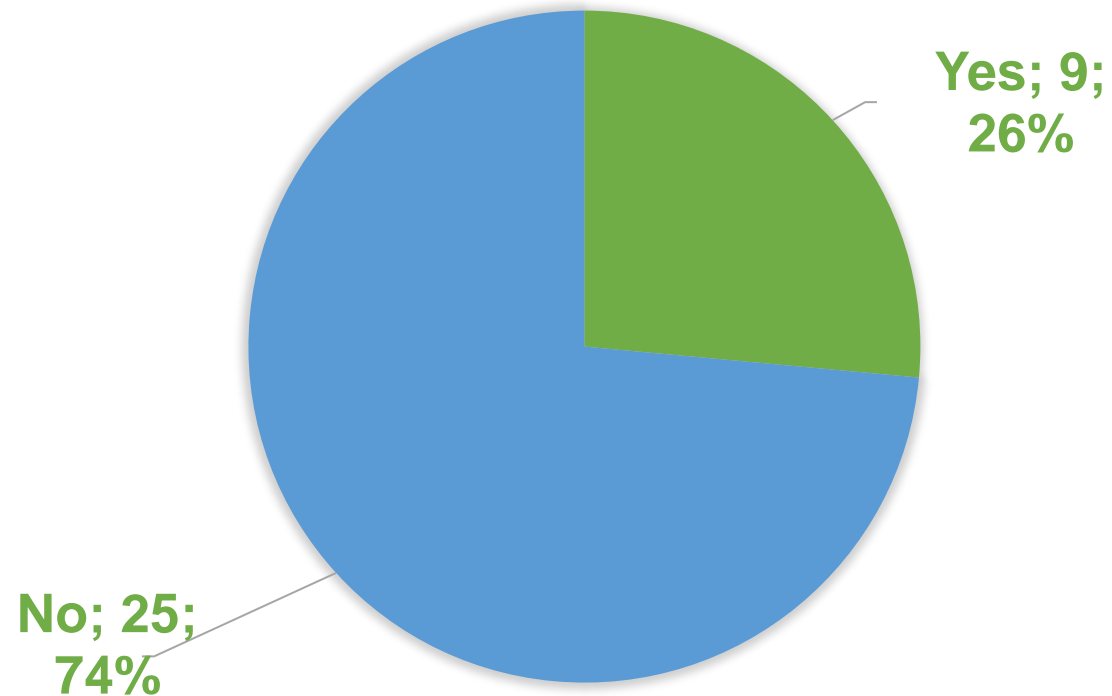




ENIL Independent Living Survey

Q 3: Do disabled people living in residential care settings have the possibility to apply for personal assistance?

DO DISABLED PEOPLE LIVING IN RESIDENTIAL CARE SETTINGS HAVE THE POSSIBILITY TO APPLY FOR PERSONAL ASSISTANCE?

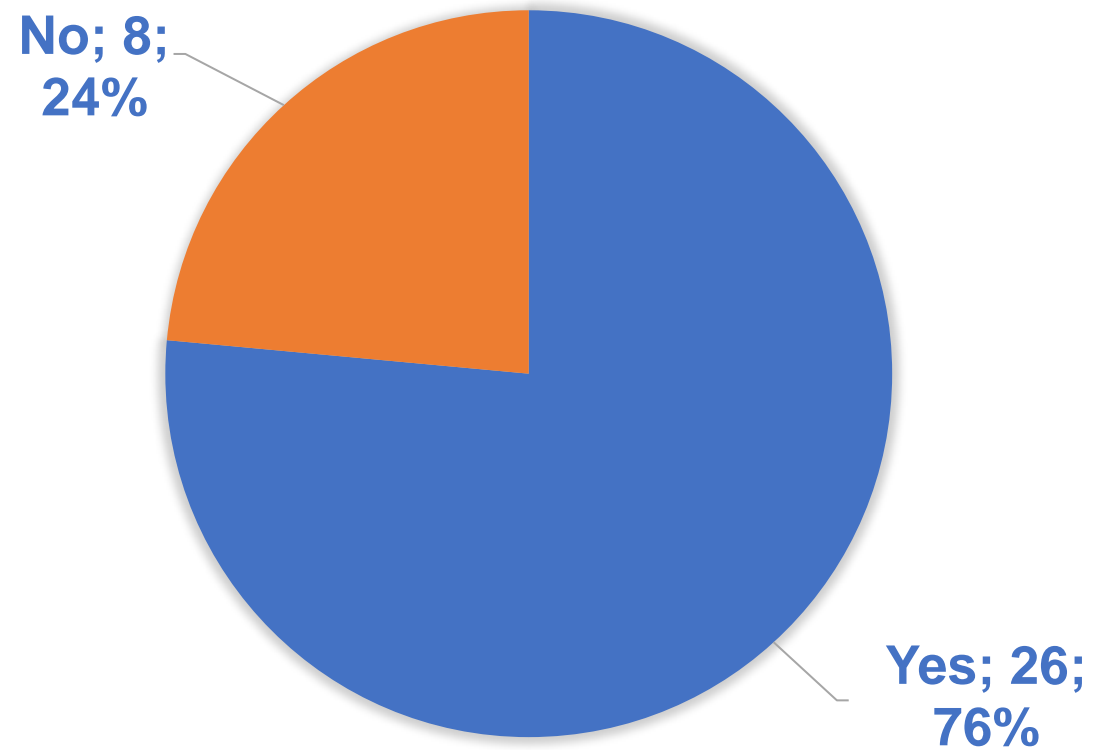




ENIL Independent Living Survey

Q 4: Are there restrictions on what PA can be used for?

ARE THERE RESTRICTIONS ON WHAT PA CAN BE USED FOR?

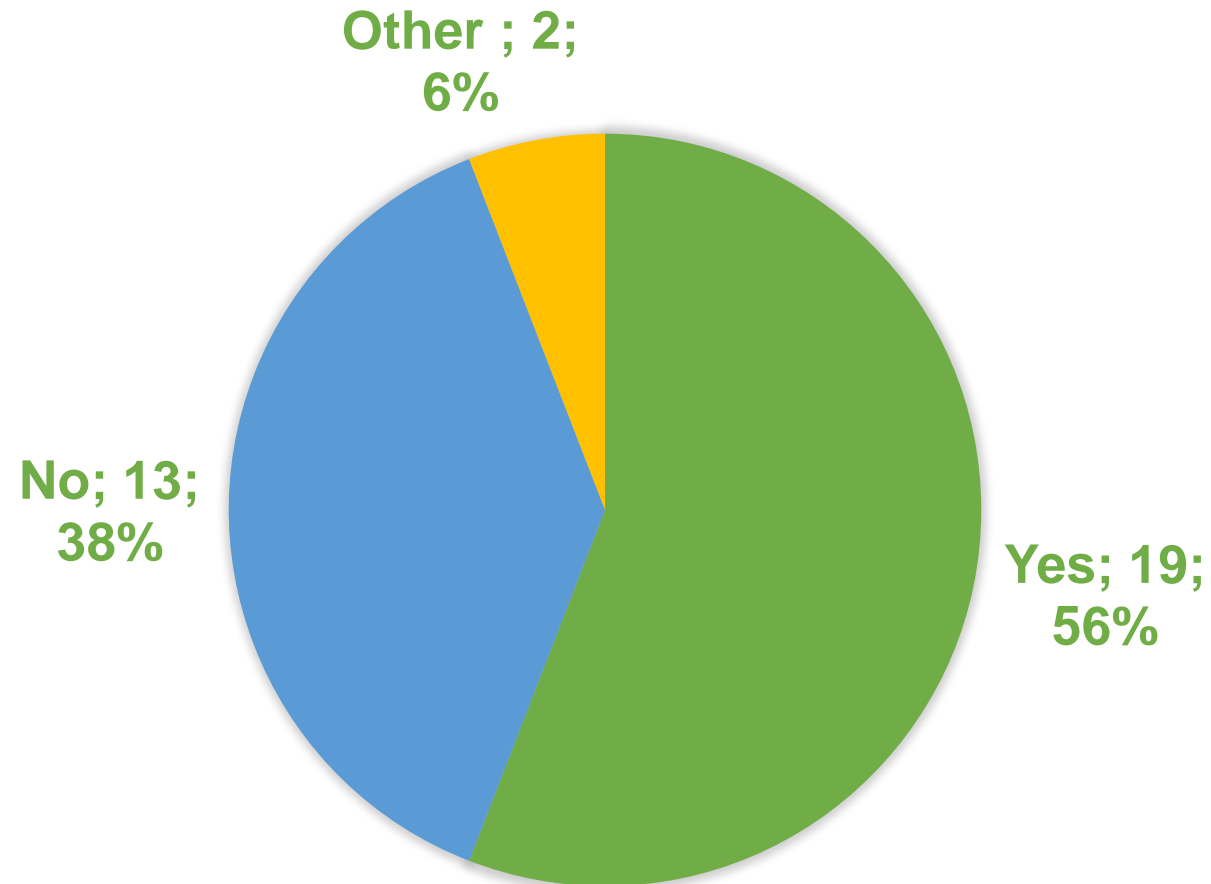




ENIL Independent Living Survey

Q 6: Is PA paid through direct payments, such as personal budgets?

IS PA PAID THROUGH DIRECT PAYMENTS, SUCH AS PERSONAL BUDGETS?

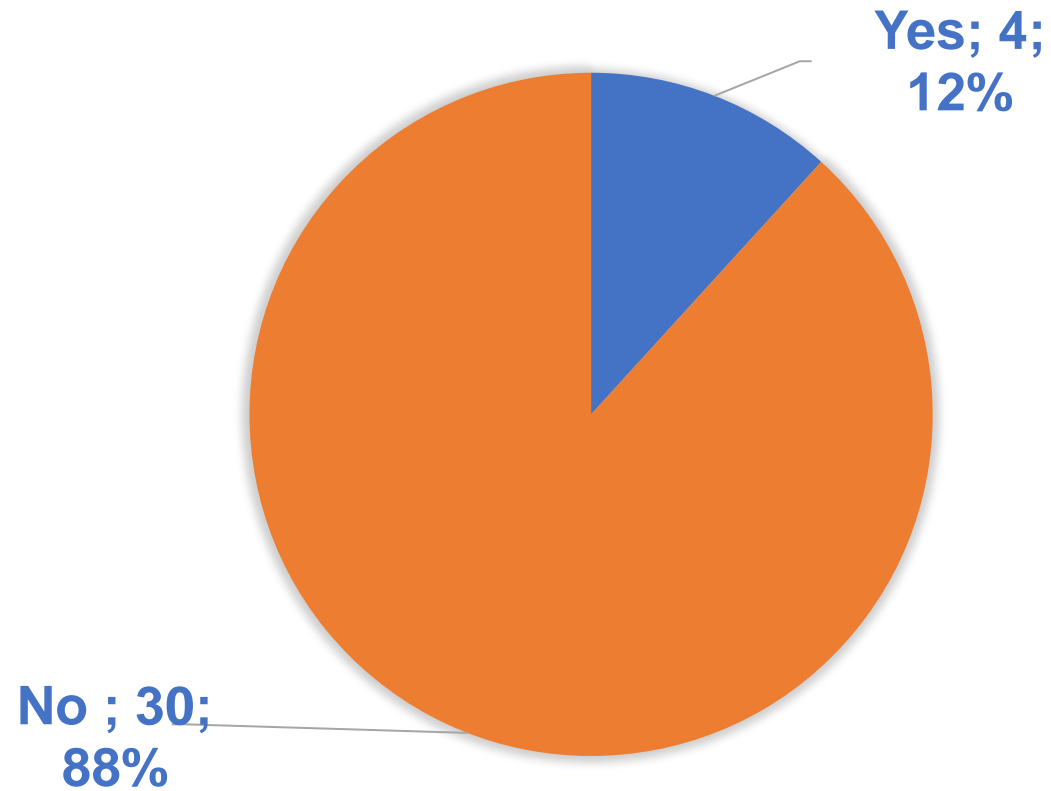




ENIL Independent Living Survey

Q7: Does the PA funding allow users to cover all their needs in practice?

DOES THE PA FUNDING ALLOW USERS TO COVER ALL THEIR NEEDS IN PRACTICE?

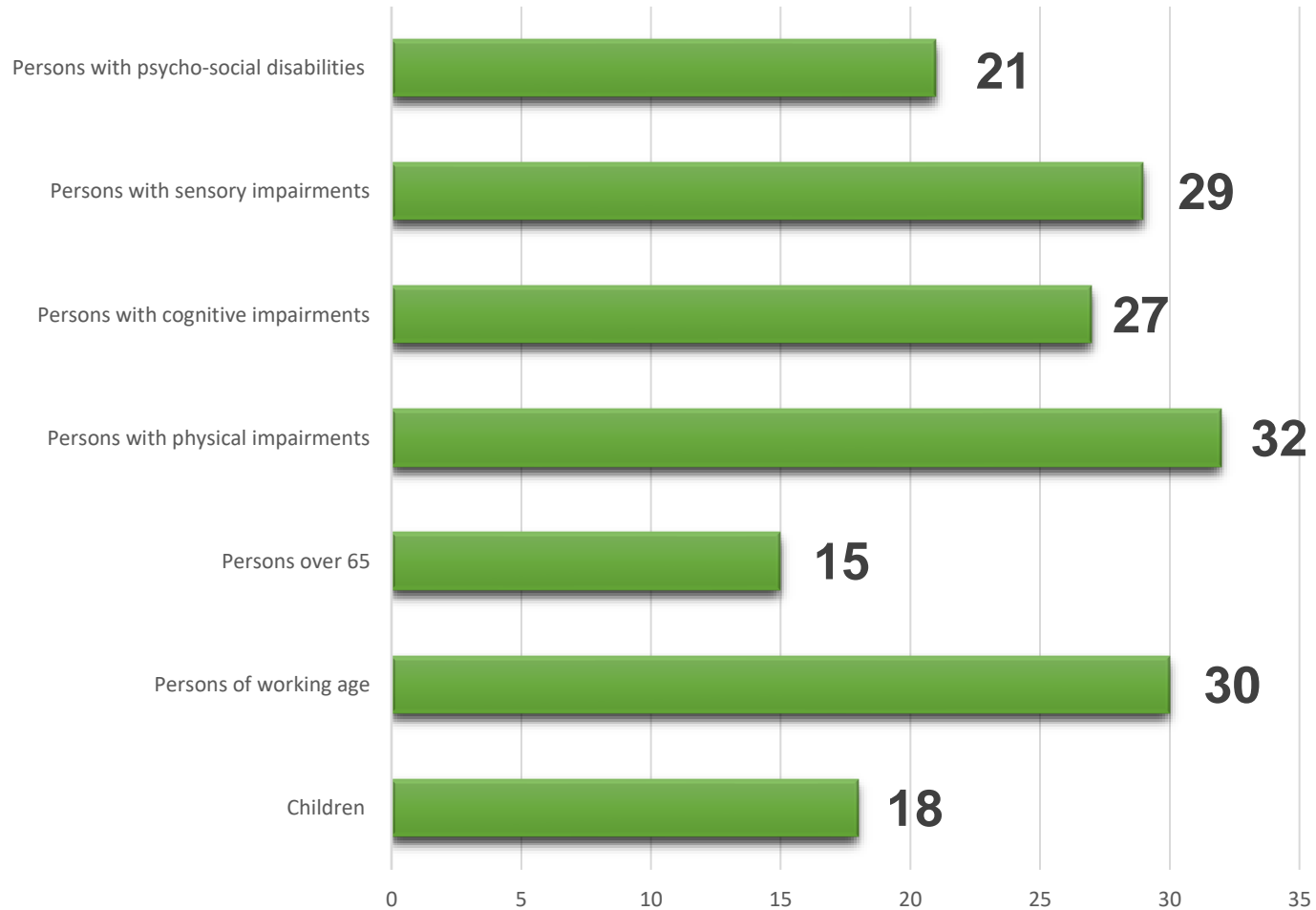




ENIL Independent Living Survey

Q 11: Who is eligible for personal assistance (PA)?

Who is eligible for personal assistance (PA)?

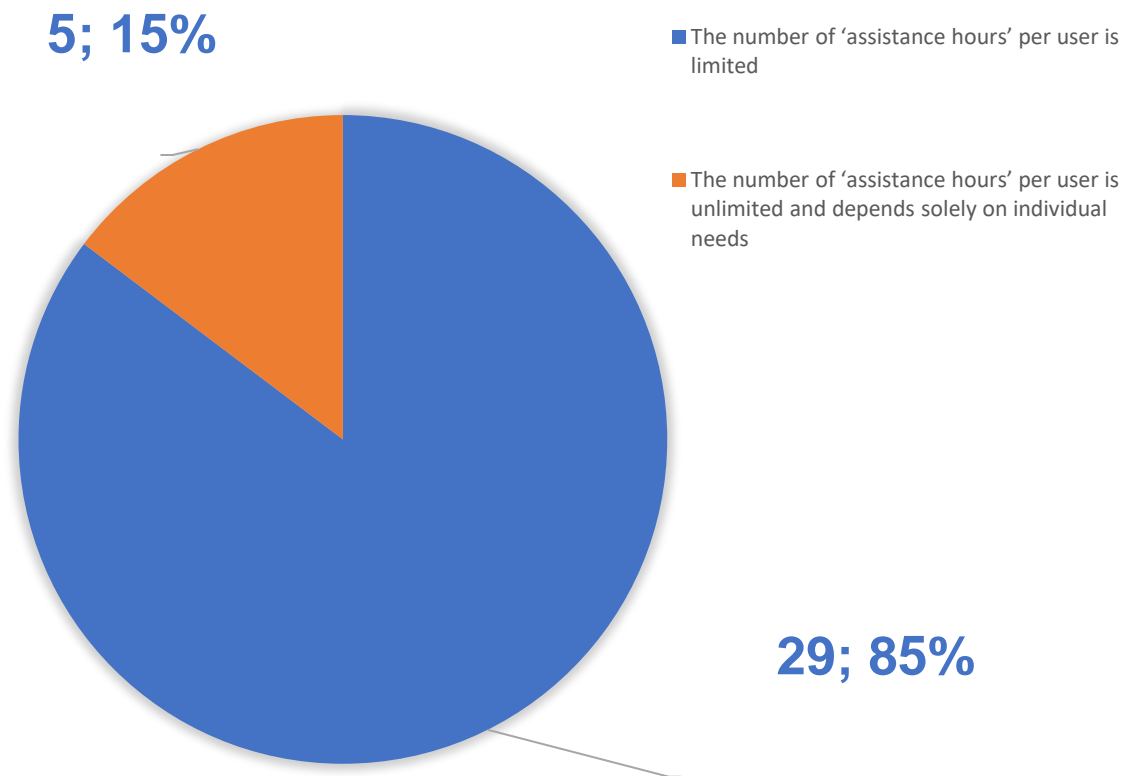




ENIL Independent Living Survey

Q 18 Is the number of assistance hours per user limited?

IS THE NUMBER OF ASSISTANCE HOURS PER USER LIMITED?





ENIL Independent Living Survey

Policy recommendations

- 1. All countries should introduce personal assistance schemes**
- 2. PA-schemes need to be well funded**
- 3. Provision needs to follow high standards across territories**
- 4. Disabled people living in residential settings need to have access to the PA-scheme and receive support in applying and passing**
- 5. Countries need to lift all restrictions on what PA can be used for**
- 6. Resources for the PA need to be dispersed directly to the disabled person in the form of direct payments such as personal budgets**
- 7. The funding needs to cover all needs in practice.**
- 8. Governments need to provide equal access to PA to disabled persons with all types of impairments**
- 9. The number of assistance hour per recipient needs to depend solely on individual needs**



ENIL Independent Living Survey

- <https://enil.eu/il-map/>

Thank you for your attention